



### MISSION

Sponsored by the U.S. Department of State's Bureau of Educational and Cultural Affairs (ECA) and administered by the Institute of International Education (IIE), the Gilman Scholarship Program diversifies the kinds of undergraduate students who study abroad and the countries and regions where they go.

### IMPACT

Undergraduates with high financial need have the opportunity to study or participate in an internship abroad, develop valuable career and language skills, and prepare themselves for the global economy while serving as citizen ambassadors in their host country. Since the program's inception in 2001, nearly 17,000 bright, well-deserving American students have received a Gilman Scholarship to study in more than 140 countries and hail from over 1,100 universities across the nation. The Gilman Program engages the private sector to increase participation.



[www.iie.org/gilman](http://www.iie.org/gilman)  
gilmanscholarship@iie.org

# Benjamin A. Gilman International Scholarship Program

## FAST FACTS 2013-14



### REACHES OVER 1,000 U.S. INSTITUTIONS IN ALL 50 STATES, INCLUDING

- Federal Pell Grant Recipients
- Ethnic Minority Students
- Students with Disabilities
- First-Generation College Students
- Tribal Colleges
- Community College Students



### MULTIPLIER EFFECT:

# 39%

Were first-generation college students

# 83%

Were the first in their family to study abroad

### REACHES A WIDE VARIETY OF U.S. INSTITUTIONS IN ALL 50 STATES:

- Historically Black Colleges / Universities (HBCU)
- Hispanic-Serving Institutions (HSI)
- Minority-Serving Institutions (MSI)
- Community Colleges



### ENCOURAGES STUDY IN NON-TRADITIONAL DESTINATIONS AND LANGUAGES:

# 71%

Studied outside of Western Europe

# 71%

Studied a language, 50% of which were Critical Need Languages

### DEMAND FOR SCHOLARSHIP:

# 9,000+

Scholarship applications received annually

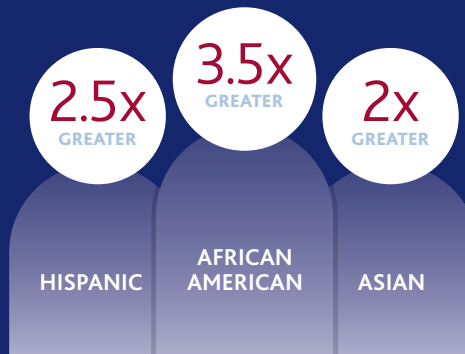
# 2,500+

Scholarships awarded each year

# 73%

Would not have been able to study abroad without the scholarship

### PARTICIPANTS ARE MORE DIVERSE THAN THE NATIONAL STUDY ABROAD POPULATION:



## INSTITUTE OF INTERNATIONAL EDUCATION